



Sveriges lantbruksuniversitet
Swedish University of Agricultural Sciences

On representing affiliations in the CERIF model

Alejandro Engelmann, Christer Enkvist, Carl-Johan Syrén

SLU University Library, Swedish University of Agricultural Sciences, Sweden

13th International Conference on Current Research Information Systems
CRIS2016, 9-11 June 2016, Scotland, UK



Available online at www.sciencedirect.com

ScienceDirect

Procedia Computer Science 33 (2014) 266 – 271



CRIS 2014

Combining VIVO and Google Scholar data as sources for CERIF Linked Data: a case in the agricultural domain

Alberto Nogales^a, Miguel-Angel Sicilia^a, Brigitte Jörg^b

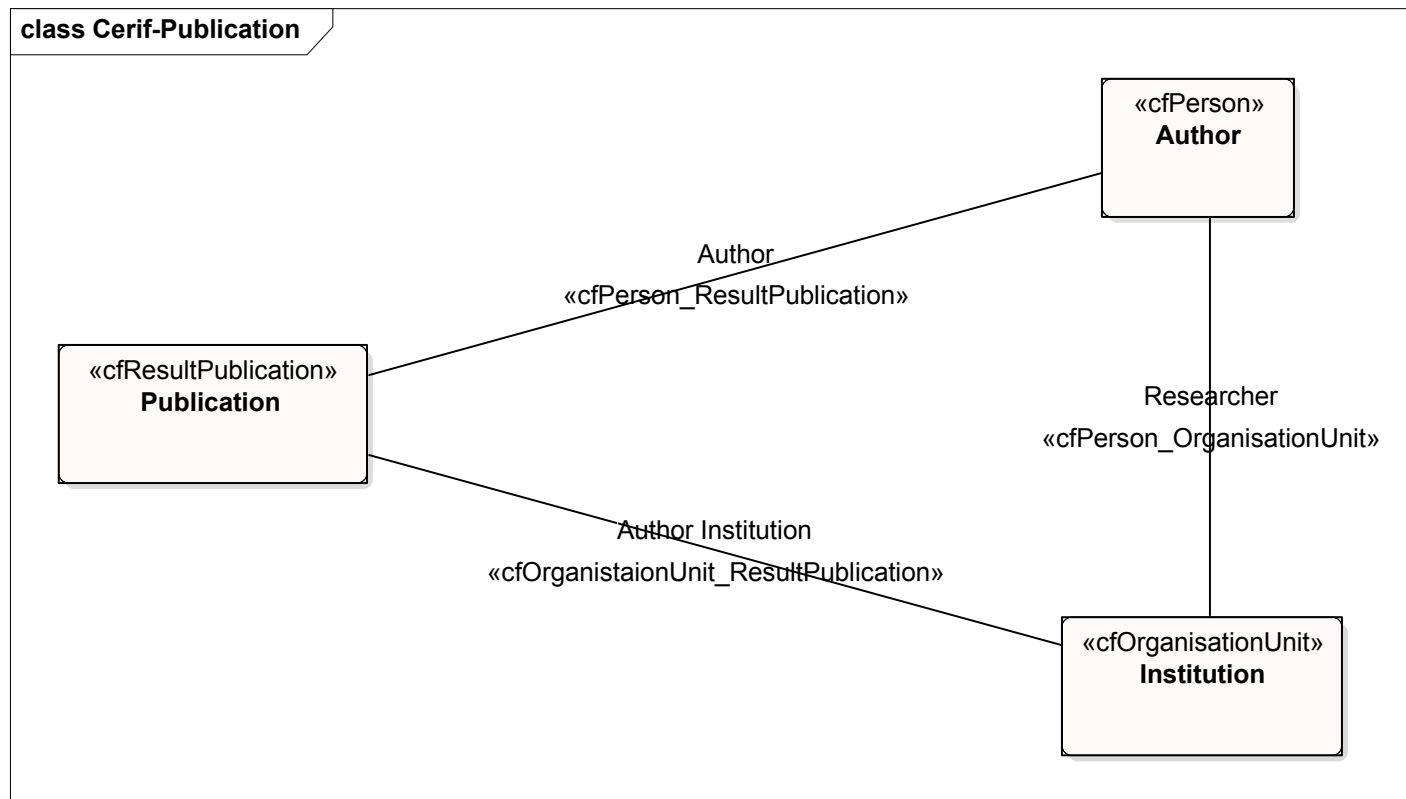
^a *University of Alcalá 28871 Alcalá de Henares (Madrid), Spain*

^b *Jei Bee Ltd. London, UK*

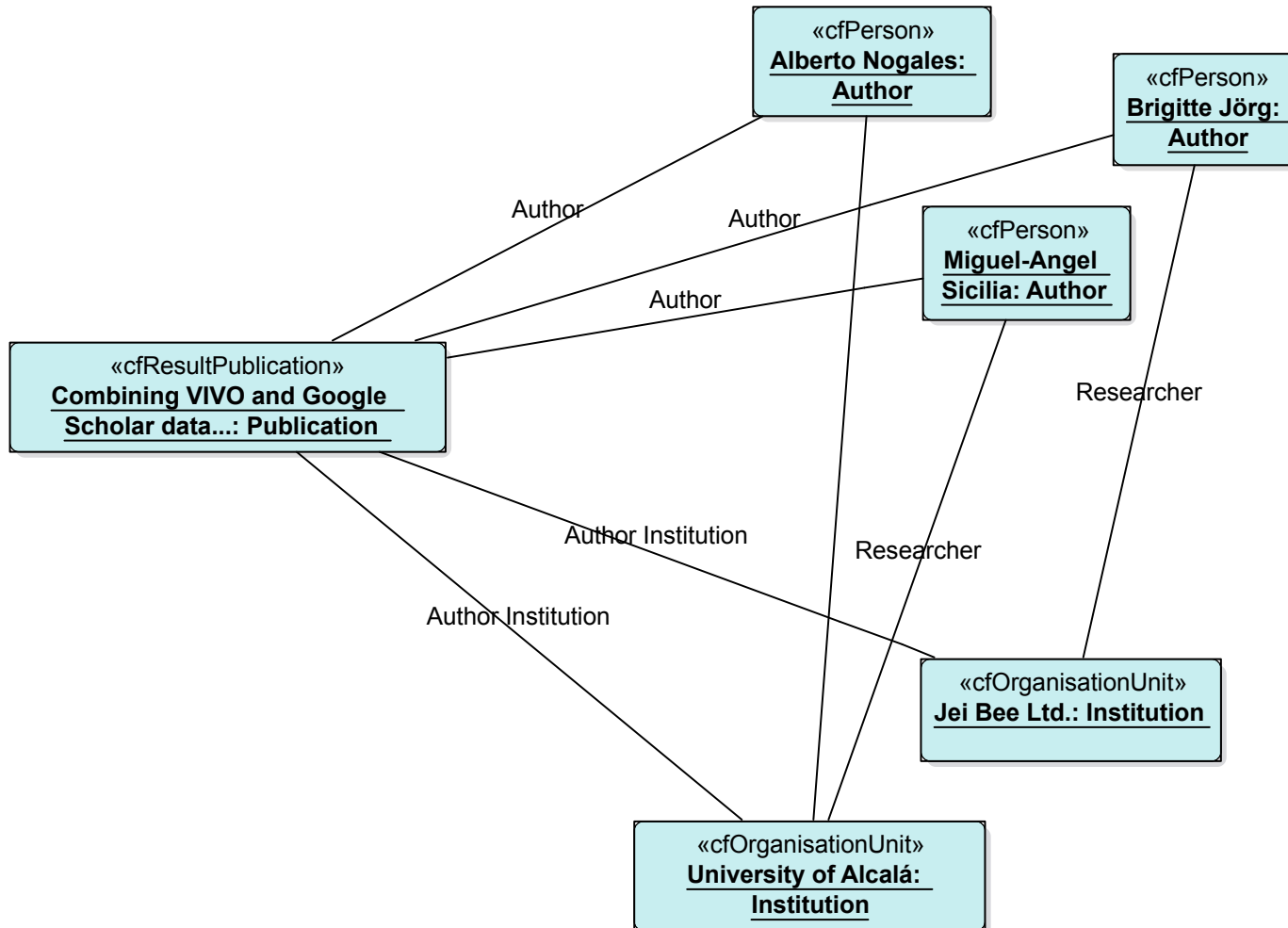
Abstract

The needs of global science have fostered open access to the results and contextual information of research organizations at an international scale. This requires the use of standards or shared data models to exchange information preserving its semantics

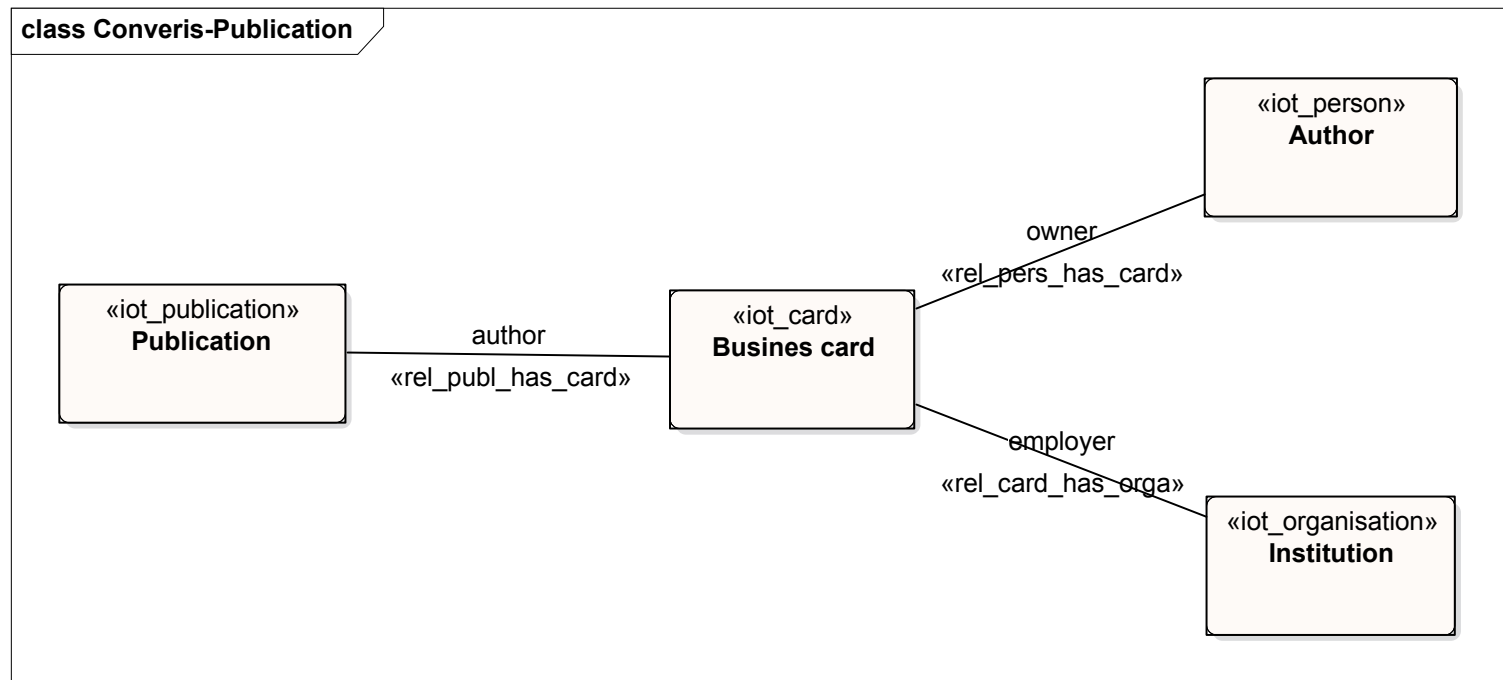
Standard CERIF affiliation model



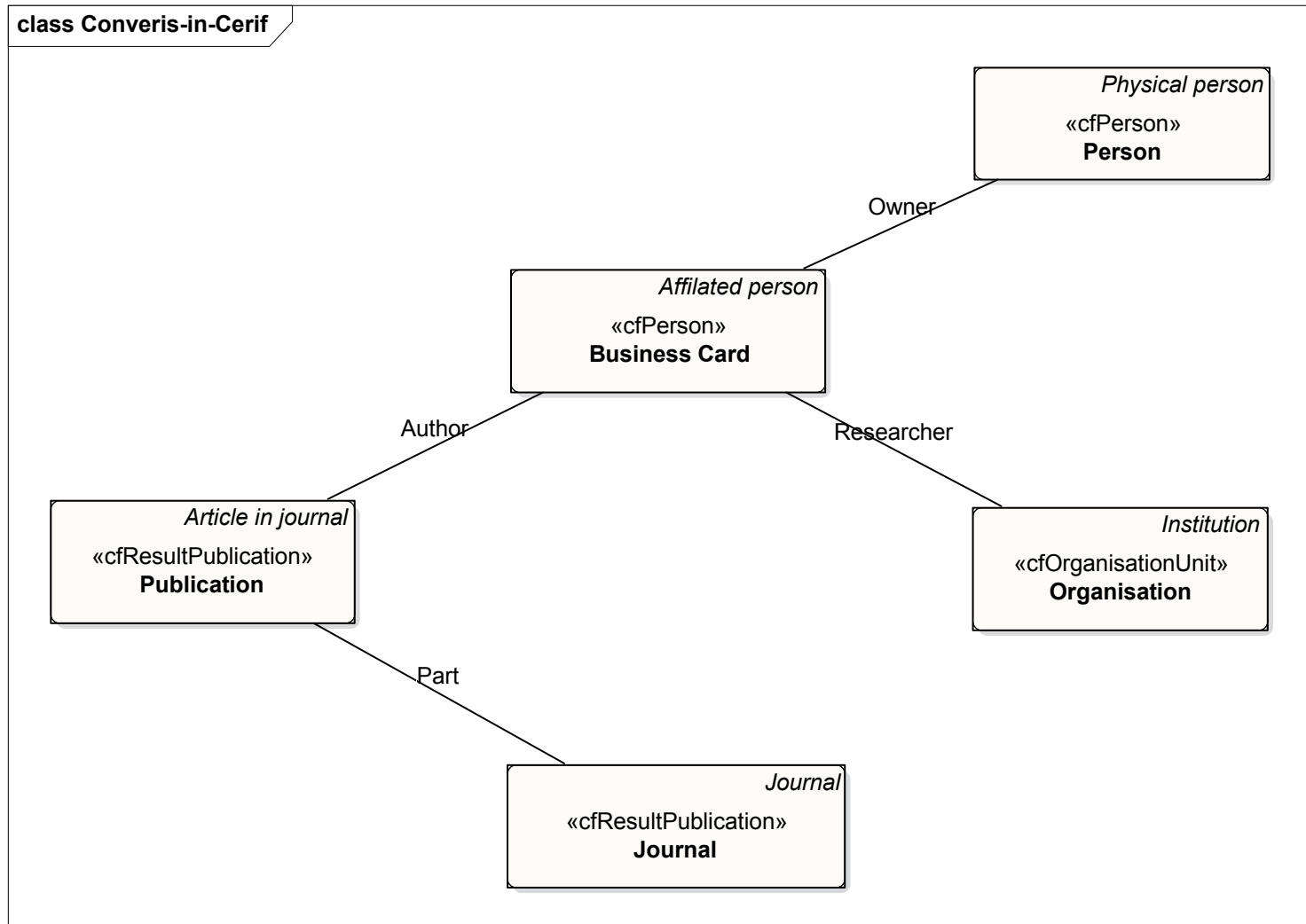
object Nogales-et-al



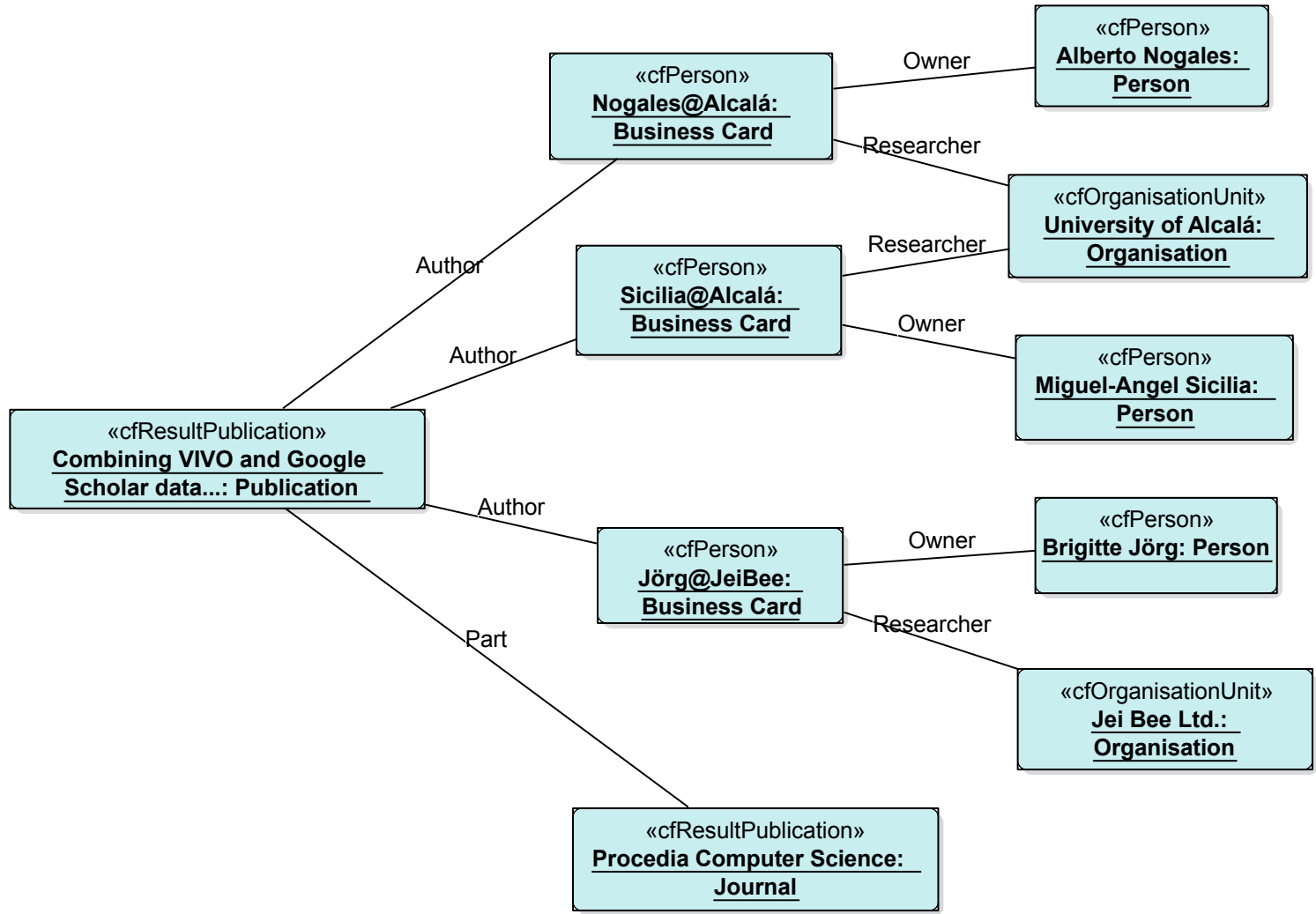
CONVERIS model



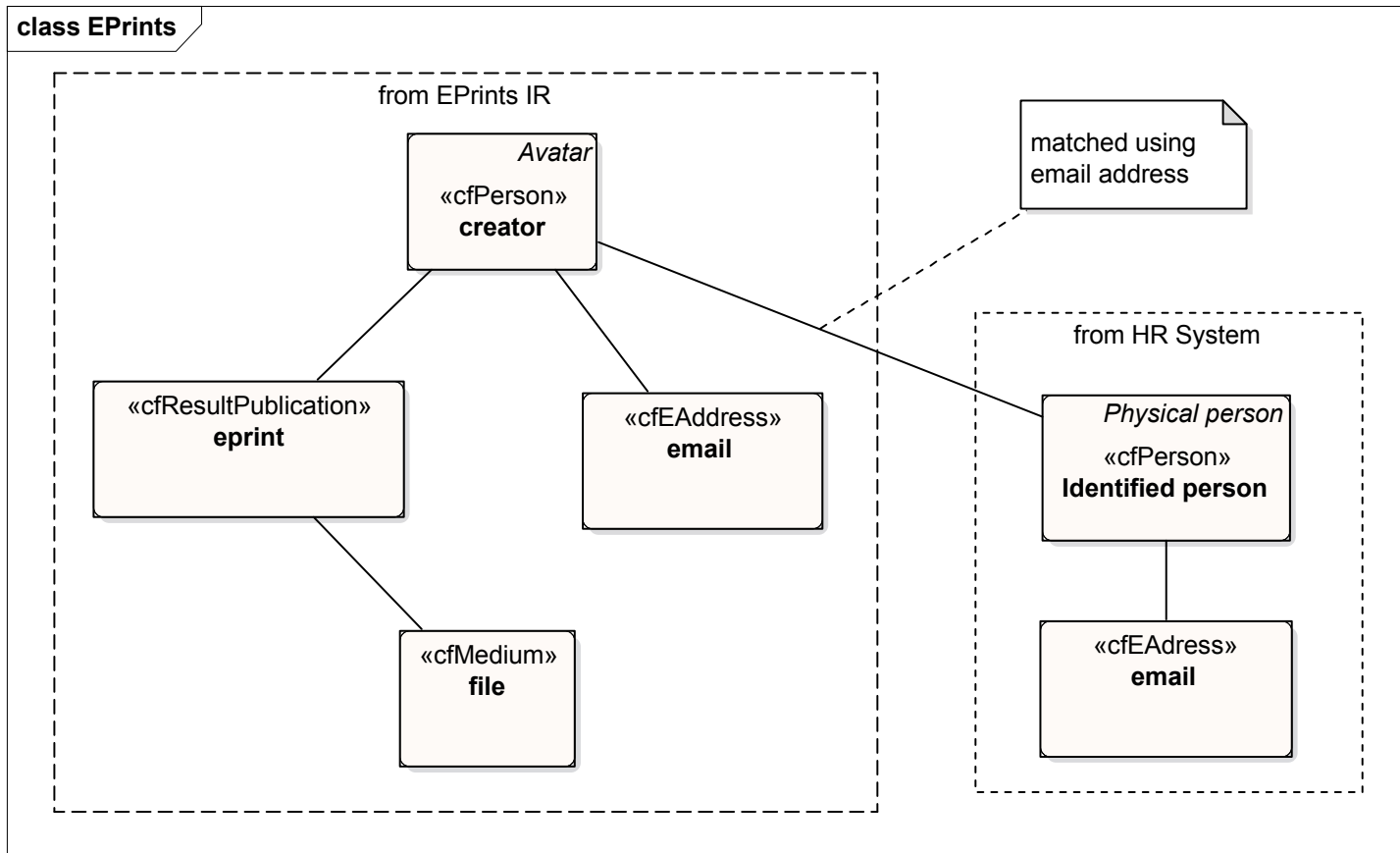
Proposed affiliation representation in CERIF



object Nogales-et-al-2



Eprints data – matching an identified person to an avatar



object Overview